

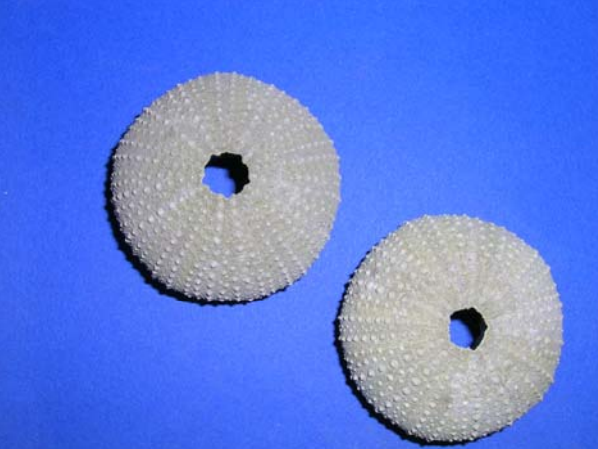
# Soprintendenza Speciale per i Beni Archeologici di Napoli e Pompei

Laboratorio di Ricerche Applicate

Aspetti di vita quotidiana nell'  
antica Pompei



# Le tecniche di indagine



## I reperti organici



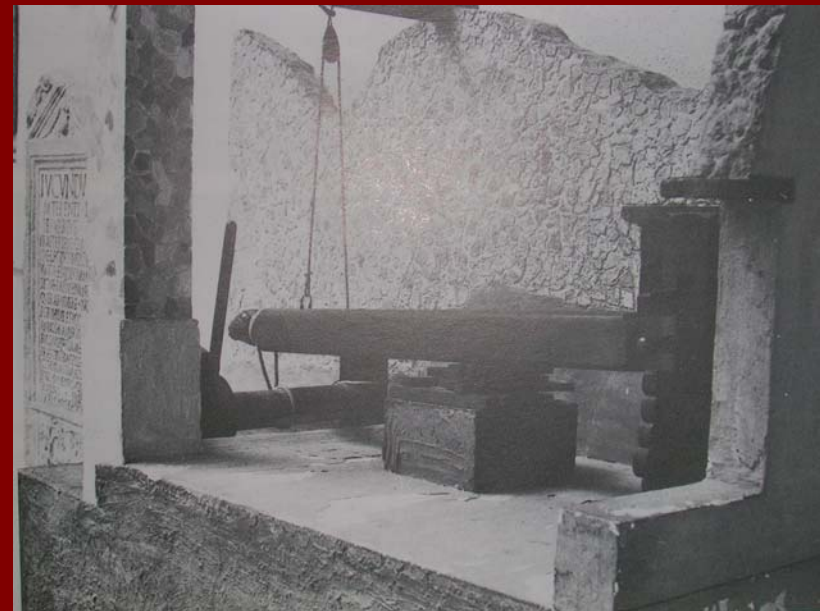
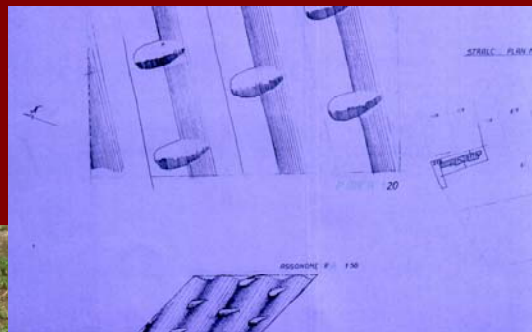


## L' iconografia

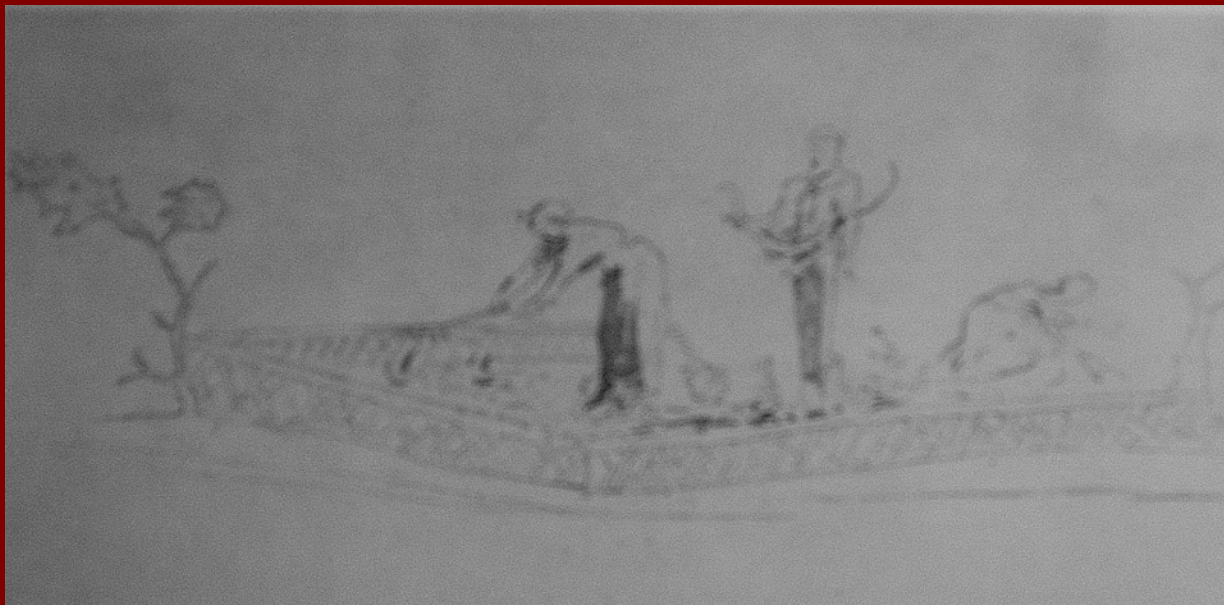




## Le testimonianze archeologiche



# Nei campi e negli orti



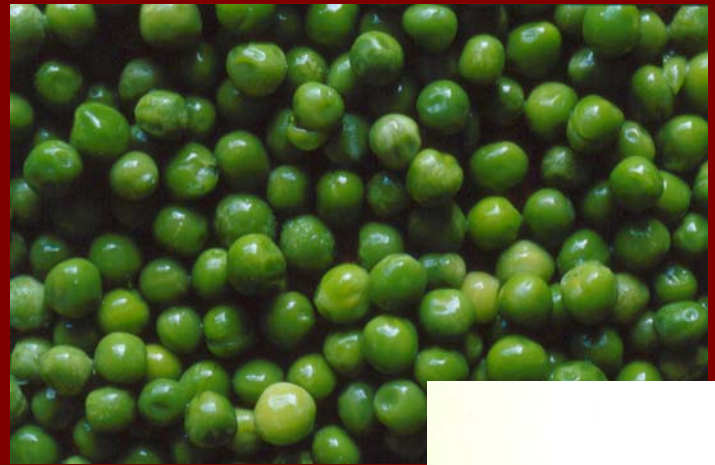
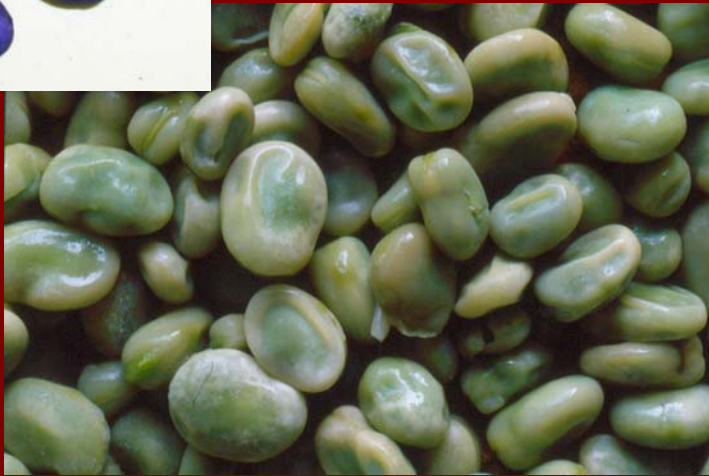
# L'olivo e la vite



# I cereali



# I legumi



# Le verdure



# Le verdure



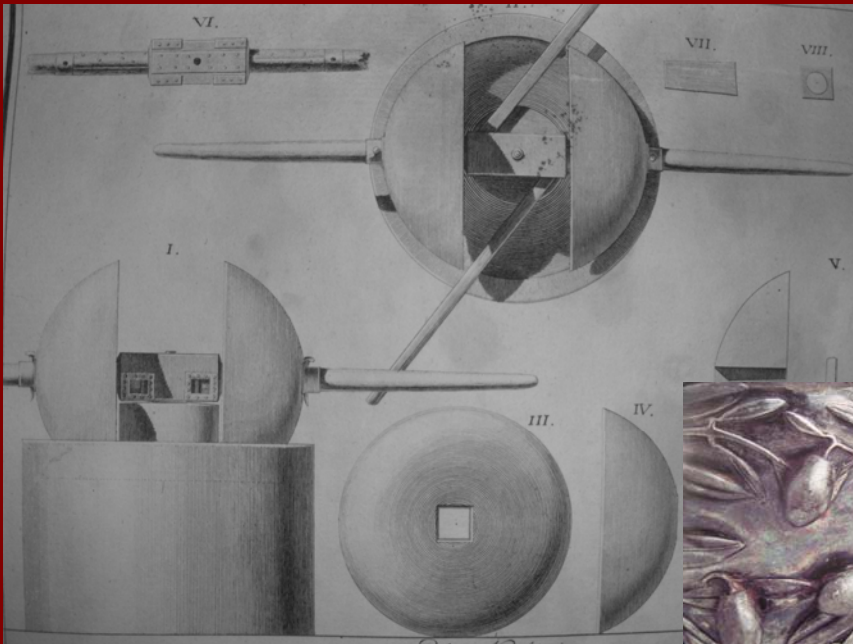
# Gli alberi da frutta



# In cucina



# I condimenti



Olio



Garum



Mosto

Aceto

Sapa



Strutto



# Gli aromi



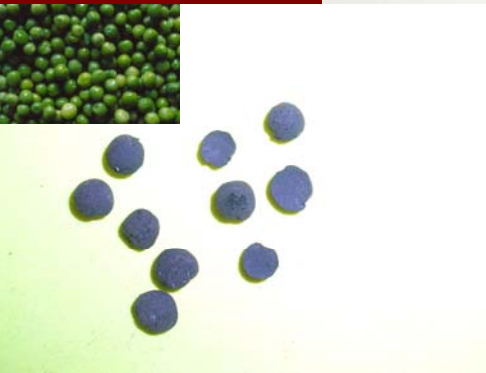
# I metodi di cottura



# In tavola



# Pane e zuppe



# I pesci



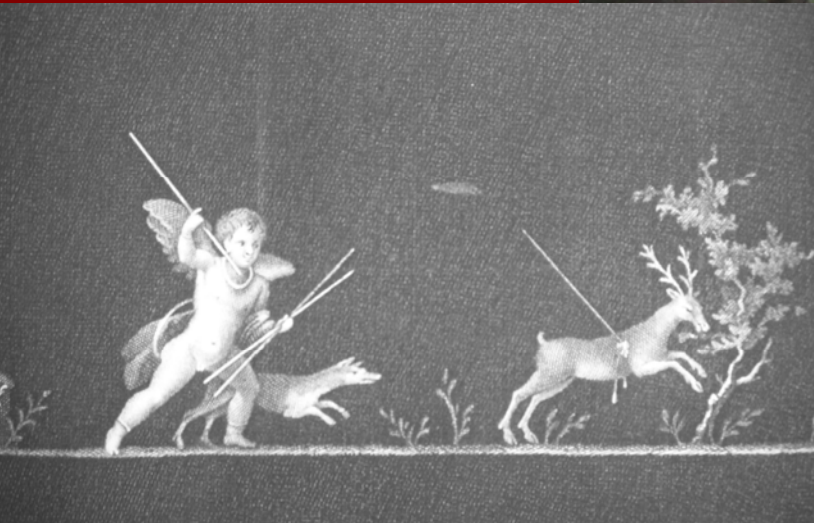
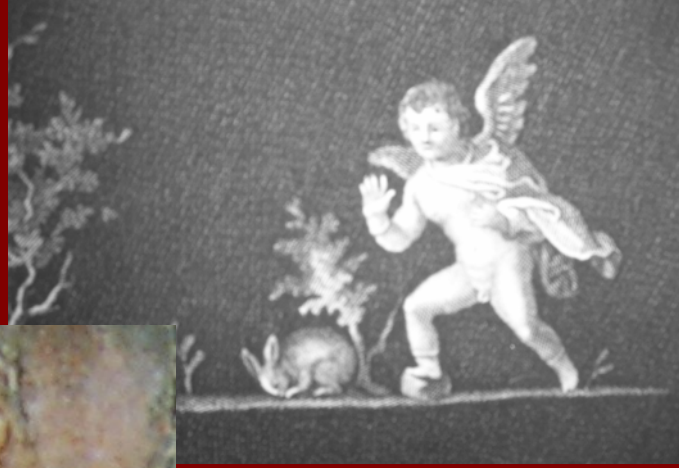
# I molluschi



# Le carni da allevamento



# La cacciagione



# Animali da cortile



# Le verdure



# I prodotti del bosco



# Uova e formaggi

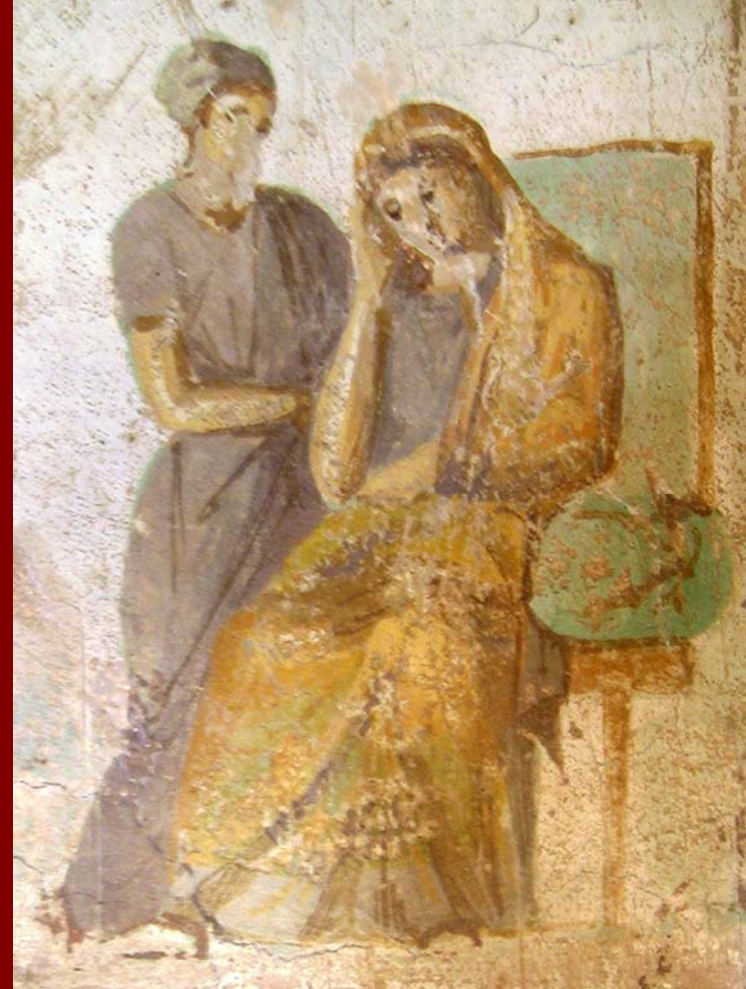


# Focacce e dolci





Il ruolo della donna nella gestione della dispensa, della farmacia di casa e del guardaroba.



# La gestione della dispensa

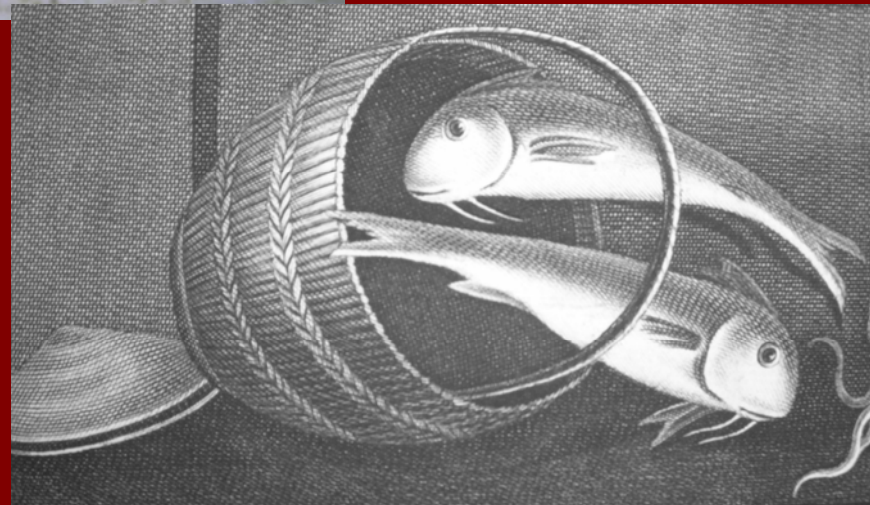


# Le carni e i pesci

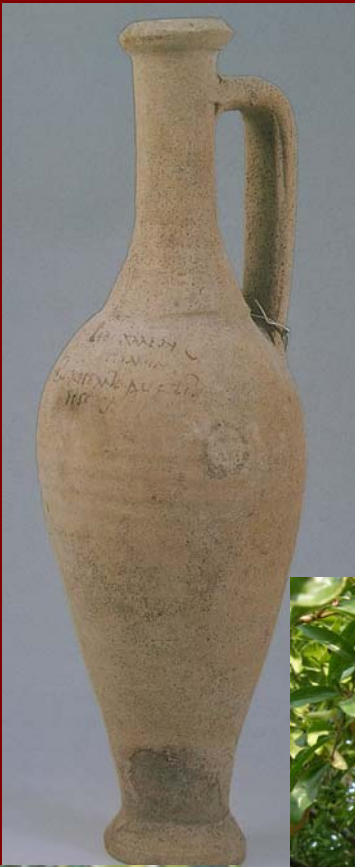
La salamoia

Lo strutto

Le spezie



# La frutta a polpa



Succo



Miele  
Sapa



# La frutta essiccata



# Gli ortaggi

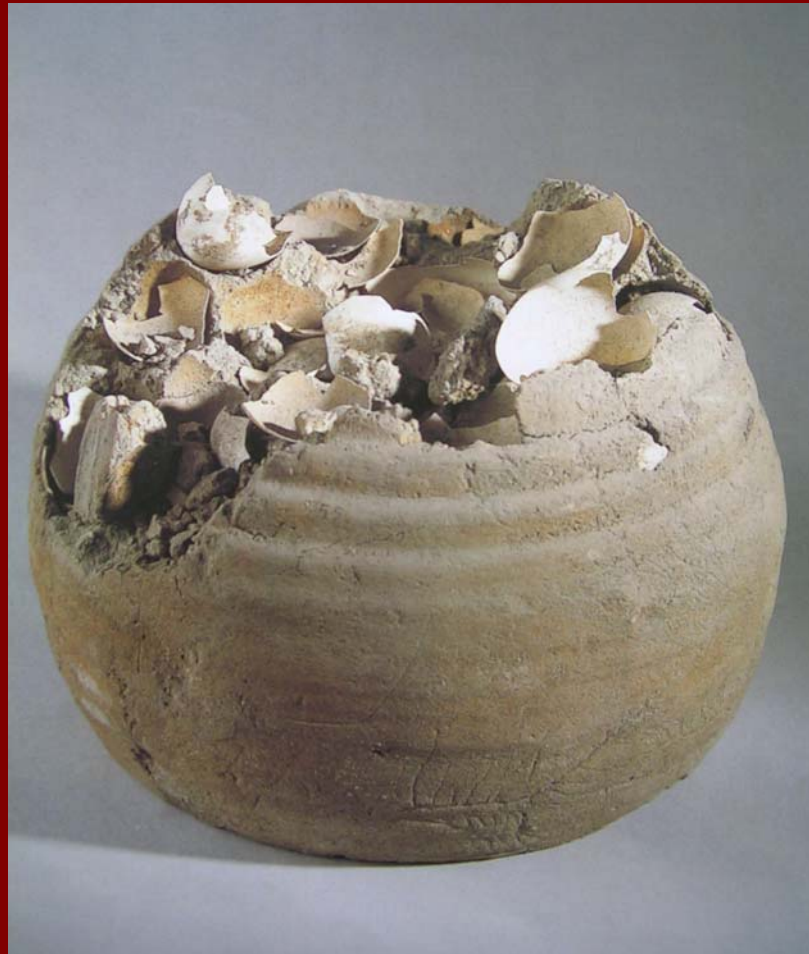


La salamoia

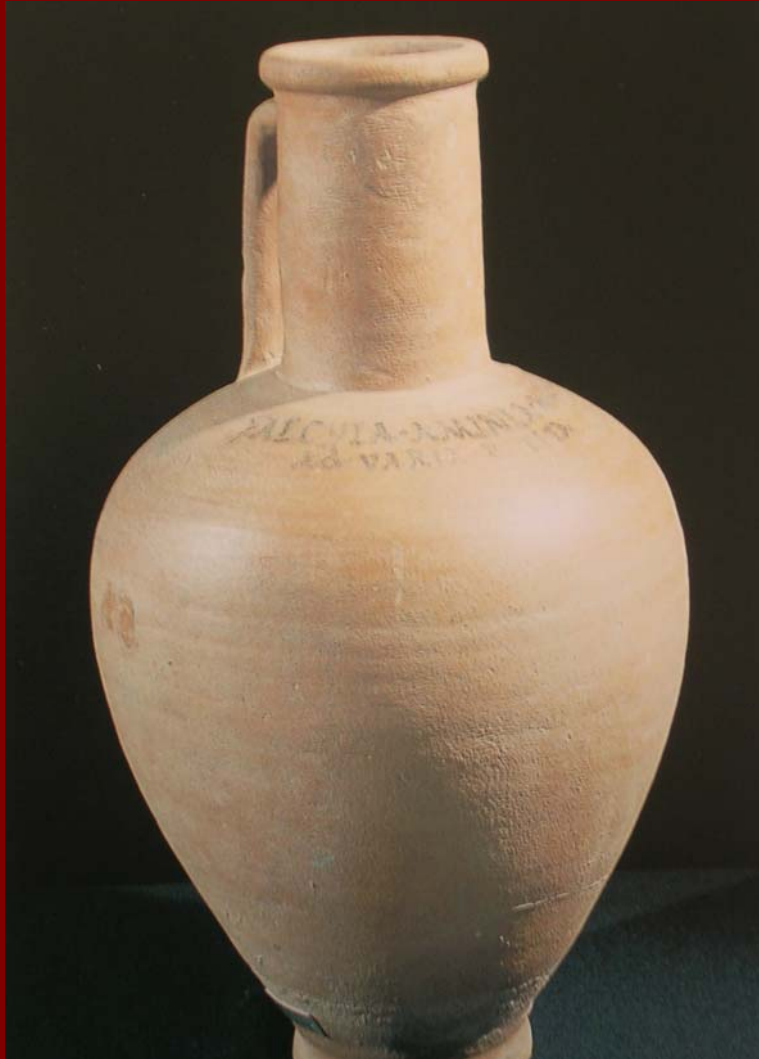
L' aceto



# Le uova



# Il vino in medicina



# La gestione del guardaroba

